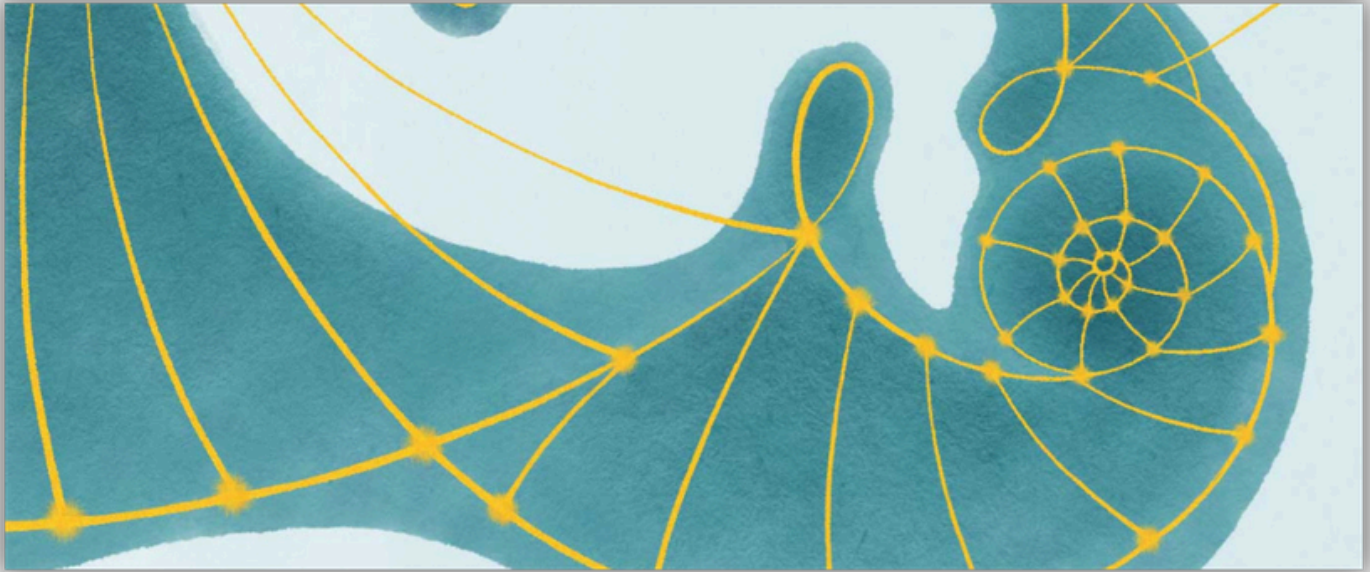


IFIS Online Colloquium: 10<sup>th</sup> Anniversary

Institut für integrale Studien  
Institute for Integral Studies



# The Future of Integral Studies



**A Decade of Emergence:  
Join us in co-creating a We-Space to explore  
the Future of Integral Studies**

## **In-Person Retreat: Vision Building**

Date: Thu - Sun, Sep 10<sup>th</sup> - 13<sup>th</sup>, 2026 |

Location: Haus Maria Lindenberg, Sankt Peter (Black Forest), Germany.

## **Online Gatherings**

Tue, Nov 10<sup>th</sup>, 2026 | 7 PM - 10 PM CET (open to public).

Wed, Nov 11<sup>th</sup>, 2026 | 7 PM - 10 PM CET (Member-only)

**JOIN US!**



Institute for Integral Studies  
<https://www.ifis-freiburg.de/>



[info@ifis-freiburg.de](mailto:info@ifis-freiburg.de)

## WHAT WE WILL EXPLORE

*As we review our work over the past decade, we see that we have successfully institutionalized Integral Politics, Developmental Psychology, Complexity Science, embodied practices, and more...*

*Now what?*

*What kind of evolution of Integral Studies is the next decade calling for?*

We invite you to join us in whatever capacity you can (for example as a Keynote Speaker, Panelist, Facilitator, etc.) to explore and address the critical gaps and opportunities for the future of Integral Studies. Together, we would like to cultivate a space (both virtually and in-person) to discuss these burning questions:

- What do Integral Studies look like today? And what might Integral Studies look like tomorrow?
- How has the need for Integral Studies changed?
- In which areas do we think there is a need for Integral Studies?
- What specific needs do we see for Integral Studies in our polycrisis? Why?
- What is our contribution? And what will your contribution be?



**Please [click here to access the intake-form](#) and indicate your interest and availability both for the retreat in September and the Online Gathering in November.**

# IN-PERSON RETREAT: THE FUTURE OF INTEGRAL STUDIES



## DATE

Thu - Sun, Sep 10<sup>th</sup>, 2026, 18h CEST - Sept. 13<sup>th</sup>, 2026, 14h CEST

## LOCATION

Location: Haus Maria Lindenberg, Sankt Peter/Black Forest, Germany.

<https://www.haus-maria-lindenberg.de/>

## PARTICIPATION OPTIONS & COSTS

**On-site, all-in fees: €375 and €495** – depending on your choice of accommodation (single/double room), not including travel cost.

**Off-site: €260 and €280** – varied, depending on food package choices, not including travel cost, or accommodation.

## JOIN US!

<https://ifis-retreat-sep-2026.eventbrite.de>



## RETREAT: ON-SITE ROOM OPTIONS

- **Single room:** €475/p + 6,30 city tax/p, to be paid on arrival\*\*
- **Double room for single person use:** €495/p + 6,30 city tax/person, to be paid on arrival\*\*
- **Shared double room (between 2 persons):** €375/p + 6,30 city tax/person, to be paid on arrival\*\*



### What is included:

- Accommodation
- All meals: breakfast buffets, lunch, coffee break, dinner
- Retreat ground access
- Organization fees (administration, program design and facilitation)
- Program & facilitated activities

## REGISTRATION

Please register **before 20 of June** via EventBrite:

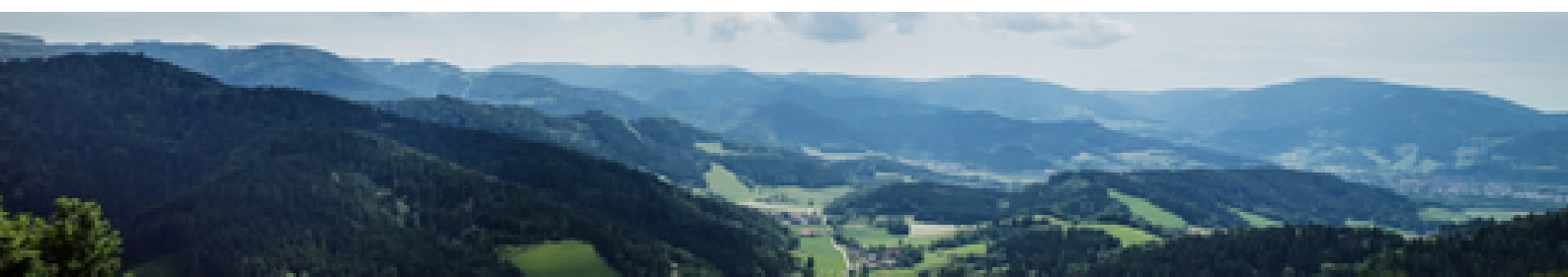
<https://ifis-retreat-sep-2026.eventbrite.de>

## RETREAT: OFF-SITE PACKAGE OPTIONS\*

- **All-inclusive:** €280/p (breakfast, lunch, snacks, and dinner + retreat ground access + organization fees + program fees)
- **No-Breakfast:** €260/p (lunch, snacks, and dinner + retreat ground access + organization fees + program fees)

(\*): **Off-site packages do not include accommodation fees or travel fees.** You can book accommodation through [booking.com](https://www.booking.com), [airbnb](https://www.airbnb.com), or local websites. Nearest town is Sankt Peter.

**At the retreat center, all food is prepared with care, ingredients are locally sourced and organic when possible.**



## CANCELLATION POLICY

If the **Organizer** cancels the event before end of June, you will receive a full refund. If you (the attendee) cancel your registration, please refer to the policy below. Please make sure to capture these important dates on your calendar.



**Before Jun  
20<sup>th</sup>, 2026**

### **0% cancellation fee**

*(you might need to pay payment processing fees from payment platforms and/or your financial institution, typically ~ 3-5%)*

**Jul 1<sup>st</sup> and July  
29<sup>th</sup>, 2026**

### **30% cancellation fee**

*(you might need to pay an additional payment processing fees from payment platforms and/or your financial institution, typically ~ 3-5%)*

**Jul 30<sup>th</sup> and  
Aug 30<sup>th</sup>, 2026**

### **80% cancellation fee**

*(you might need to pay an additional payment processing fees from payment platforms and/or your financial institution, typically ~ 3-5%)*

**After Aug 30<sup>th</sup>,  
2026**

### **100% cancellation fee**

*(you might need to pay an additional payment processing fees from payment platforms and/or your financial institution, typically ~ 3-5%)*

## REGISTRATION & PAYMENT

We use **EventBrite** to help us simplify registration and payment processing.

*EventBrite accepts various payment methods (EX: Credit/Debit Card or Bank Transfer). Please choose a payment method that suits your needs.*

**JOIN US!**

<https://ifis-retreat-sep-2026.eventbrite.de>

# ONLINE GATHERINGS

## AGENDA

Tue, Nov 10th, 2026

07:00 PM - 07:30 PM CET	Open Ceremony & Intro
07:30 PM - 08:15 PM CET	Keynote Presentations
08:15 PM - 08:45 PM CET	Panel Discussion
08:45 PM - 09:15 PM CET	Break-out Session
09:15 PM - 09:30 PM CET	What's Next & Closing
09:30 PM - 10:00 PM CET	Meet & Greet

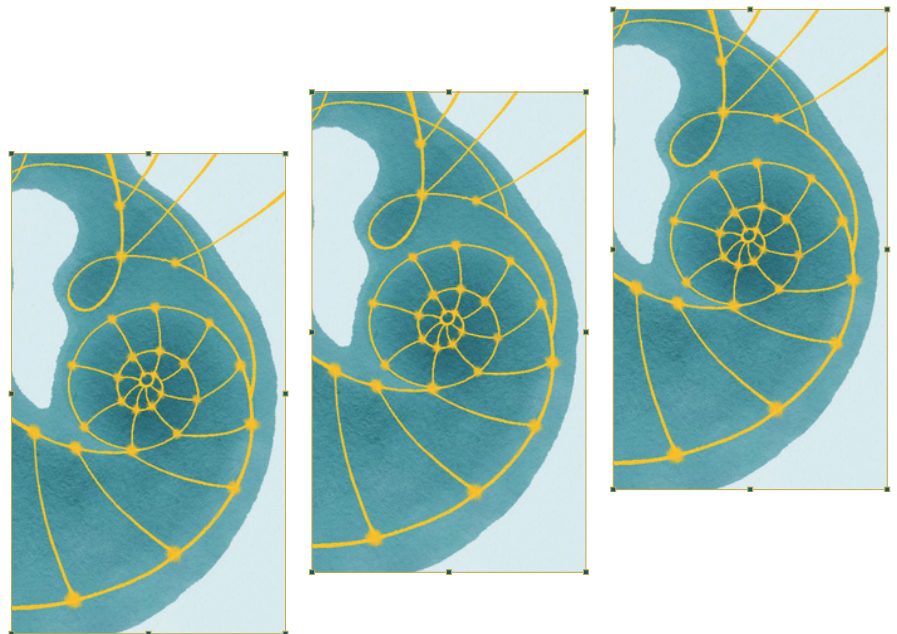
Wed, Nov 11th, 2026

07:00 PM - 07:30 PM CET	Member Updates
07:30 PM - 08:15 PM CET	Keynote Presentations
08:15 PM - 08:45 PM CET	Panel Discussion
08:45 PM - 09:15 PM CET	Break-out Session
09:15 PM - 09:30 PM CET	Planning Ahead & Closing
09:30 PM - 10:00 PM CET	Open Collaborative Inquiry

## KEYNOTE SPEAKERS & PANELISTS

We invite you to join us **in whatever capacity you can** (for example as a Keynote Speaker, Panelist, Facilitator, etc.) to explore and address the critical gaps and opportunities for the future of Integral Studies.

Your presence would not only honor our history but also help us calibrate the compass for the next ten years of Integral Studies. We would be happy to receive your support, and include your insights.



***We look forward to receiving confirmation of your participation, as well as your permission for us to share your profile and feature you on our event webpage, official brochure, news letter, and promotional materials.***

**Please [click here to access the intake-form](#) to indicate your interest and availability.**

# OUR GIFTS TO YOU!



When you take part in any of these events, as a way to express our gratitude, you will receive a special discount Code for you to use when you join in any or all of these eligible upcoming workshops and programs.



**ACE - Leadership Development for Women Change-Makers**

3 days onsite near Freiburg im Breisgau, Germany: Oct. 10-14, 2026

3 online sessions: Sep. - Nov. 2026

3 individual coaching sessions

## Leadership Development for Women Change-Makers

A Leadership Development Program for experienced women leaders who want to become a powerful agent of change in the not-for-profit world - whether international organization, non-profit, public service, civil society or academia, and who want to have it all - wellbeing and great positive impact!

[\[Read more and apply...\]](#)



**Politik ohne Spaltung - das geht!**  
Einführung in die Prinzipien integraler Politik

## Politik ohne Spaltung - das geht!

Einführung in die Prinzipien integraler Politik für Bürger/innen, politisch Interessierte und aktiv Engagierte, die sich nach einem neuen Bewusstsein in der Politik sehnen und auf der Suche nach Impulsen dazu sind, wie dies konkret praktisch umgesetzt werden könnte. Datum: 31. Oktober - 1. November, 2026 - 10:00 - 18:00

[\[Read more and apply...\]](#)



**Deep Democracy integral: Demokratie vertiefen und Schatten integrieren**

2-Tagesseminar

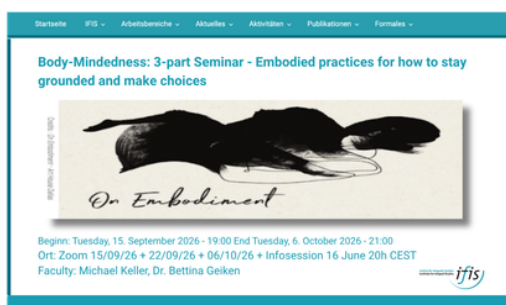
Freitag, 20. Nov 2026 - 18:00  
Sonntag, 22. Nov 2026 - 18:00

Ort: Haus des Engagements, Freiburg, Germany

Dozentin: Dr. Elke Fein (IFIS)

## Deep Democracy integral: Demokratie vertiefen und Schatten integrieren

Dieses Seminar bietet eine Einführung in Theorie und Praxis der Deep Democracy als Beitrag zu einer neuen politischen Kultur und zur Vertiefung unserer Demokratie – gewinnen Sie neue Perspektiven und Anregungen für ein Umdenken in unseren Ansätzen sowie zahlreiche methodische Werkzeuge. Datum: 20 - 22 November, 2026. [\[Read more and apply...\]](#)



**Body-Mindedness: 3-part Seminar - Embodied practices for how to stay grounded and make choices**

Begin: Tuesday 15. September 2026 - 19:00 End Tuesday, 6. October 2026 - 21:00  
Ort: Zoom 15/09/26 + 22/09/26 + 06/10/26 + Infosession 16 June 20h CEST  
Faculty: Michael Keller, Dr. Bettina Geiken

## Body-Mindedness: 3-part Seminar - Embodied practices for how to stay grounded and make choices

Our body is a very fine antenna for the most subtle signals and reveals an array of non-verbal signals that are interpreted immediately as congruent (or not) with our verbal messages. Build your practice to stay grounded in a world that is geared to deplete your creative attention AND learn to make embodied decisions that open new and surprising possibilities beyond the typical either/or options. [\[Read more and apply...\]](#)

## ORGANIZER

### Your familiar and dedicated IFIS Board Members



[Angelika Pohnitzer](#)

Board Member | IFIS  
Founding Partner, WLC

A dynamic community organizer and leader focusing on sustainable transformation on individual as well as organisational level, I weave projects and groups of people together to co-create a supportive eco-system. Main target groups: social enterprises, public sector and other non-profits



[Bettina Geiken, PhD](#)

Board Member | IFIS  
Learning Designer & Facilitator

An Integral learning designer and social architecture, I use innovative meta-frameworks (Cynefin, AQAL, SDi, U-theory, IDG, OPO etc) to make sense of what is happening, and support the agency and coevolving of self and system in making room for the creation of better suited life affirming ecosystems.



[Dr. Elke Fein](#)

Managing Director | IFIS  
Director | Center for Integral Politics

A dedicated Integral practitioner and political thinker, I stand for visions, strategies and practices that bring out a sustainable and livable future. I develop and work toward a paradigm shift in our politics – A further development and deepening of our democracy based on integral awareness.

We strive to serve you to our best ability, – and welcome any form of support. Should you wish to contribute to bring about a wholesome experience for yourself and other attendees, please contact us at [info@ifis-freiburg.de](mailto:info@ifis-freiburg.de)

## SPONSOR US!

Your support helps us lower the cost of the retreat for everyone who wants to take part in this gathering, To further make it possible for participants who need financial support, we welcome your sponsorship!

[MAKE A GIFT!](#)